

Welcome To The

ROVNER®
P·R·O·D·U·C·T·S
♦ MADE IN THE USA ♦

Resource Guide!

**A Comprehensive Guide To
Rovner® Ligatures And Accessories!**



www.rovnerproducts.com

For Product Support:

410-252-7750 x701

support@rovnerproducts.com

© 2021 Rovner® Products, Inc. All Rights Reserved.

REV 010121

TABLE OF CONTENTS

Page 3.....	Seven Reasons to Choose Rovner
Page 4.....	Dark Ligature
	Light Ligature
	MK III Ligature
Page 5.....	Versa Ligature
	Star Series Ligature
	Versa-X Ligature
Page 6.....	Van Gogh Ligature
	Platinum Ligature
	Platinum Gold Ligature
Page 7.....	PROTEUS Rectangular Bore Clarinet Barrel
	Rovner Mouthpiece Manager
Page 8.....	The Well-Stocked Dealer's Guide to Success
Page 9.....	In-The-Know Tips and FAQ's
Page 10.....	More Product Tips
	The Proper Fit
	Cleaning & Maintenance
Page 11.....	All Models, Sizes, Finishes & Cap Size Chart
Page 12.....	Most Common Fit Chart
Page 13.....	Ligature Size Relationship Graphic
	Cap Size Relationships Chart
Page 14.....	Mouthpiece Brand To Ligature Sizing Guides (Intro)
Page 15.....	Mouthpiece Brand To Ligature Sizing
	<i>Generic (Most Common Fit) to AM Mouthpiece</i>
Page 16.....	Mouthpiece Brand To Ligature Sizing
	<i>ARB to Berg Larson</i>
Page 17.....	Mouthpiece Brand To Ligature Sizing
	<i>Berg Larson to Brilhart</i>
Page 18.....	Mouthpiece Brand To Ligature Sizing
	<i>Brilhart to Fobes</i>
Page 19.....	Mouthpiece Brand To Ligature Sizing
	<i>Fobes to Guardala</i>
Page 20.....	Mouthpiece Brand To Ligature Sizing
	<i>Hawkins to Lakey</i>
Page 21.....	Mouthpiece Brand To Ligature Sizing
	<i>Lakey to Otto Link</i>
Page 22.....	Mouthpiece Brand To Ligature Sizing
	<i>Otto Link to RCW</i>
Page 23.....	Mouthpiece Brand To Ligature Sizing
	<i>RCW to Runyon</i>
Page 24.....	Mouthpiece Brand To Ligature Sizing
	<i>Runyon to Selmer</i>
Page 25.....	Mouthpiece Brand To Ligature Sizing
	<i>Selmer to Theo Wanne</i>
Page 26.....	Mouthpiece Brand To Ligature Sizing
	<i>Theo Wanne to Wolf Tayne</i>
Page 27.....	Mouthpiece Brand To Ligature Sizing
	<i>Wolfe Tayne to Yanagisawa</i>

SEVEN REASONS TO CHOOSE ROVNER®

- **We Have A Ligature For Every Type Of Player!**
Whether you're an excited beginner in the earliest stages of development or an exceptional player of great renown touring the world, a Rovner ligature can help you sound your very best!
- **We're The "Go To" For Band Directors In The Know!**
When band directors recommend Rovner® they do it with full confidence that their students will enjoy a high performance product at a sensible price, offering many years of reliable performance and excellent support.
- **Continuous Improvement!**
We've been obsessed with it for nearly 50 years! Our products continue to evolve, break new ground, and offer an expanding accessory wardrobe that provides performance-enhancing solutions to players at every level of achievement! Our goal is to produce powerful, elegant, technically superior ligatures that will deliver accurate intonation and increased ease of play for woodwind players in every musical genre and in any setting. Although there have been many imitators over the years, there's only ONE Rovner®! We're the ligature of choice for discerning musicians and educators, providing consistently superior performance now and for generations of players to come!
- **More Models...More Sizes!**
With NINE different ligature models, each available in anywhere from nine to 24 sizes, we have a ligature that can fit most any mouthpiece!
- **Our Products Are Innovative!**
Starting with the original DARK, every Rovner® ligature has been designed using a combination of science, engineering, sound technology, and music theory...a powerful mix resulting in a synergistic relationship between the reed, ligature, mouthpiece...*and* the player!
- **Our Materials!**
Rovner® ligatures are made in the USA of USA-made components. The ligature textile and hardware are created to our specifications and go through a series of treatments and proprietary processes to ensure their durability and imbue them with energetic response!
- **Our Products Are Patented!**
That means nobody else makes a ligature with the same unique features resulting in the same exceptional performance capabilities! Our Next Generation models feature Mass-Loaded Technology® and/or our unique Resonating Ribs®. Our Classic models have been updated, too, both aesthetically and to take full advantage of the performance boost of our Resonating Ribs® and patented elements!

Patents. See Website.



DARK

- The Original...But Updated For Even Greater Resonance!
- A Superb “Generalist” Providing A Dark, Warm, Centered, Tone
- The “Go To” For Music Educators For Its Reliability, Easy Installation, Durability & Performance
- Two Dozen Sizes To Fit Most Any Mouthpiece!

Often Selected By:

- Players seeking an easy-to-use, multi-genre ligature
- Concert band/orchestra players
- Jazz band players



LIGHT

- A Variation On The Dark, For Those Seeking A Brighter Sound
- The Light Is Responsive And Free-Playing
- Ideal For Those Seeking A More Contemporary Sound

Often Selected By:

- Jazz band players
- Some rock/blues players
- Some marching band players (although other Rovner ligatures can offer better projection for competing with the brass)



MK III

- Another Variation On The Dark, The MK III Delivers A Warm Sound
- Enhanced Facility In Any Musical Setting Or Genre
- Offers Greater Weight And Tonal Substance
- Often Appeals To Band Directors Needing An Extra Boost To Their Woodwinds

Often Selected By:

- Concert band/orchestra players
- Jazz or some rock/blues players
- Some marching band players (although other Rovner ligatures can offer better projection for competing with the brass)



VERSA

- A Favorite Among Pro Players, And Better Than Ever, The Versa Is Ideal For The Player Seeking To Fine-Tune The Ligature's Response And Tonal Qualities
- Features Repositionable Flaps And A Cradle With Two Inserts That Can Be Configured In Various Ways, Offering Complete Control
- Rewards The Player With A Big, Rich Sound...Superb In Any Setting

Often Selected By:

- Concert band/orchestra players (*very popular with clarinetists!*)
- Jazz band players
- Some marching band and rock/blues players



STAR SERIES

- Exceptionally Resonant And Free-Blowing...Won't Color The Tone
- Improves Intonation For The Beginning Student...Makes Playing Fun!
- Durable And Easy To Install, Even For The Youngest Players
- Delivers Warmth And Resonance In Acoustic Settings: Band Room, Basement and Beyond

Often Selected By:

- Concert band players
- Acoustic jazz players
- Great for woodshedding...less projection...it bathes the player in sound!



VERSA-X

- Rich, Focused And Versatile...Accesses A Full Range Of Expression
- Offers Evenness Of Scale, Projection And Control Through All Registers
- Repositionable Flaps Help Achieve The Darkest Tone When They Cover The Cradle...Brighten The Tone By Tucking Them Underneath The Cradle

Often Selected By:

- Concert band...Jazz...Marching Band...Rock...The Versa-X does it ALL, for pros and progressing students alike!
- Great for band directors looking for that next step up in performance!

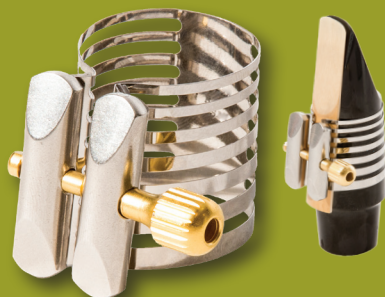


VAN GOGH

- A BIG Ligature Producing An Astonishingly Big, Rich, Full, Sound That Shines In Any Setting, Any Genre
- Superb Reed-Gripping, Especially Of Synthetics, Allowing Full Reed Vibration With No Mashing
- Neutral In Tone, It Breaks The Paradigm Of “Bright or “Dark,” Responding Readily To Subtle Adjustments And Giving The Player The Ultimate Control

Often Selected By:

- Concert band/orchestra players
- Jazz, rock/blues, marching bands
- Solosits & recording artists who want a clean, “uncolored” tone

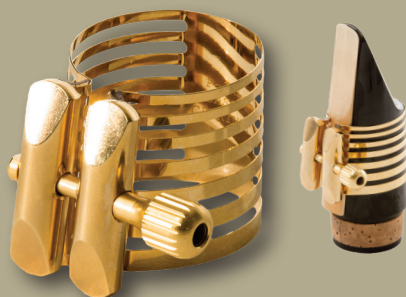


PLATINUM

- Rovner's First All-Metal Ligature, Blending Peerless Performance And Visual Beauty
- Effortlessly Played, With Incredible Evenness Of Scale And Superior Control
- Offers Superb Facility & Response
- Produces A Centered, Medium-Dark, Ringing, Bell-Like Tone
- Bolsters The Lower Register And Beautifully Supports The Altissimo

Often Selected By:

- Concert band/orchestra players
- Jazz and rock/blues players
- Players seeking to smooth out a “harsh” set-up



PLATINUM GOLD

- All The Incredible Benefits Of The Original Platinum, But Drenched In A Layer Of Gold Plating That Introduces A Warmer, Darker Aspect
- Helps Synthetic Reeds Sound More Like Cane!
- Both Platinum Ligatures Are Durably Constructed To Hold Their Shape And Offer Years of Performance-Enhancing Service

Often Selected By:

- Concert band/orchestra players
- Jazz and rock/blues players
- Players who want their metal ligature to provide topnotch performance!

PROTEUS

THE RECTANGULAR BORE CLARINET BARREL

Superior Intonation & Greater Ease Of Play For Every Level Player, From The Developing Student To The Pro "Doubler" Who Struggles When Moving From Sax To Clarinet.

Revolutionary, Patented Approach Personalizes The Playing Experience By Simply Rotating The Barrel For The Most Dynamic Response!

Band Students (and woodwind doublers!) will notice better intonation and greater ease of play!

Band Directors will find a powerful and cost-effective tool for improving clarinet performance!

Experienced Players will notice increased clarity of throat tones and increased tonal dimension, more even scales, improved articulation, more incisive and dynamic response and improved altissimo!



**Sizes 62-68
To Achieve
Optimum Tuning**

**Our Durable
"Pro-Finish"
Polymer Is
Attractive And
Stable In All
Weather Conditions**

THE MOUTHPIECE MANAGER

BY ROVNER®



**Organize And Display
12 Saxophone Or Clarinet
Mouthpieces Of Any Size...
Durable, Convenient,
Lightweight, Washable,
Stackable When
Not In Use!**

GREAT FOR
Mouthpiece Collectors
Band Directors • Music Stores
Instrument Repair Shops

The Well-Stocked Rovner Dealer's Guide To Success

You know your customer base...now let us help you choose the ligatures to best meet their needs! And because we can process our distributor orders in just five business days, it's easier than ever for you to satisfy the unwavering demand for Rovner performance! See below for some general guidelines!

<p>DARK LIGHT MKIII</p>		<p>Beloved for decades by players of every type (and often the go-to for band directors) the Rovner DARK is your must-have. Stock as many of the 24 sizes as possible! The LIGHT and MK III are variations on the Dark, offering two more options for Rovner "classic" model lovers looking for a slightly different sound. Consider stocking the basics.</p>
<p>VERSA VERSA-X</p>		<p>The VERSA is a top performer, often recommended and extremely popular with pro players. Stock the basics-<i>plus</i>. The VERSA-X comes in at a lower price point and offers all the versatility any player at any level could want. It is also the perfect step-up ligature for any student player who got a great start on the Dark and is looking for the next level of performance. Stock as many sizes as possible!</p>
<p>PLATINUM PLATINUM GOLD</p>		<p>The PLATINUM and PLATINUM GOLD are both outstanding performers that can satisfy the most discerning player. Players preferring an all-metal ligature will find unparalleled performance, surprising durability and an attractive price point compared to other "premium" ligatures on the market. Both are superb at bringing some refinement to a harsher-sounding mouthpiece. Consider stocking the basics-<i>plus</i> in both models!</p>
<p>VAN GOGH STAR SERIES</p>		<p>The VAN GOGH is a unique ligature that, because of the buzz it has created among pros, is gaining a definite toehold in the ligature market. Players who try it are blown away by its free-blowing presence and will do your marketing for you! Consider stocking the basics. The STAR SERIES offers yet another alternative to the Dark. Its extreme resonance makes it great at providing physical feedback to developing players or when projection is less important. Consider stocking the basics.</p>

In-The-Know Tips!

Become Your Store's Resident Rovner Expert!

DARK LIGHT MKIII	The Dark, Light and MK III are high-performing "generalists" with broad appeal. Although these are the models most historically identified as Rovner, ALL have been updated to include our latest patented features and ALL perform better than ever. Even players who think they "know" Rovner may be surprised at what they hear!
VERSA v.s. the VERSA-X	The Versa (which did evolve from our "Eddie Daniels" model) has been updated too, resulting in even greater performance and a new surge of interest! Don't forget to explain that it can be configured in six different ways for the ultimate control. Unlike the Versa, the Versa-X has a stationary cradle providing the "sweet spot" for projection. Covering the cradle gives the darkest tone... ideal for concert band! Exposing it adds some extra "edge" for jazz and marching band players.
PLATINUM v.s. the PLATINUM GOLD	The main difference? The Platinum is medium-dark while the Platinum Gold produces a warmer, darker tone that helps synthetic reeds sound more like cane! Both perform even better than they look! Recommended installation is with the large pins against the reed. However, some players (Eb clarinet or soprano players) may prefer to invert the ligature with the pins opposite the reed for comfort and ease of installation. The hardware can simply be reversed so the thumbnut is again on the right.
VAN GOGH	This BIG, free-blowing ligature is much taller than all other Rovner models, giving it great reed-gripping capabilities, especially for synthetic reeds. It holds just the edges of the reed, eliminating reed warping and mashing. The large pins supply it with the power to produce a big, full sound. It sits higher than usual on the mouthpiece. Pressing the ligature's "V" with your thumb eases installation. Tighten fully, then experiment with tone by adjusting the tension on the thumbnut.

FAQ's

Why does Rovner make so many models?

Each model was designed to solve a problem or enhance the playing experience, supporting players at every stage of development or achievement, in any genre and in any setting. And there are no specifically "pro" or "student" models...a player can choose any model that provides the best support.

I'm a vegan. Are Rovner ligatures made of leather?

Nope. Not now. Not ever.

I'm a southpaw. Can I swap the hardware so the thumbnut is on the left?

Sure! Just do it carefully so the pins stay as they were when you remove the thumbnut and the screw.

Can I invert my ligature on my mouthpiece?

Yes again, except for the Versa and Versa-X.

More Product Tips!

The Proper Fit

Ligatures: Rovner's one-screw design with floating pins is engineered to offer the most flexible fit to accommodate a wide range of mouthpiece configurations and sizes. As long as the ligature holds the reed securely and the screw doesn't make contact with the surface of the mouthpiece, you can expect Rovner's patented performance whether the ligature's pins are close together or far apart. Although other leather or "fabric" ligatures on the market may stretch over time, Rovner's proprietary textile does not. It does, however, offer a level of compliance or "give" as part of its reed-accommodating performance attributes. Over time, a Rovner ligature (the Platinum, Platinum Gold and Van Gogh in particular) will take a "set" to your mouthpiece.

Caps: Can be re-formed slightly to adjust their fit. Warm the cap in a cup of hot (not boiling!) water. To expand the fit, slip the warmed cap onto the mouthpiece with the ligature in place. Allow to cool over night. To tighten the fit, heat the cap in hot water, then wind a rubber band around it, pulling the edges tighter, then allow it to cool over night. It will take a new, tighter set to the mouthpiece.

Cleaning & Maintenance

A Rovner ligature is an investment that can provide many years of excellent service. Some of the earliest Rovner Darks (our original model) are still in circulation and have been in constant use for decades! These simple tips will help keep Rovner ligatures in topnotch condition for optimal performance.

Lubrication: The hardware on each Rovner ligature is lubricated before it leaves the factory. To keep the screw and thumbnut in good working order, occasional re-lubrication of the threads is necessary. Use a bit of household oil or cork grease.

Cleaning: Our textile ligatures can be cleaned with just mild soap and water. Allow to dry. The Platinum ligatures can also be cleaned with mild soap and water...NEVER with an abrasive cleanser...and then just buffed with a soft cloth to a lovely shine.

The Natural Aging Process. After years of service, your textile ligature may become dull in appearance. This is normal. If there is any fraying along the edge it can be carefully trimmed away with sharp scissors. Replacement hardware is available if the parts are ever lost or damaged.

Indicates Polished Alloy Only Hardware Finish
Indicates Dual Tone Finish Hardware
Indicates Fully Gold-Plated Ligature and Hardware
Cap Sizes Updated 11/2016. Where changes were made, old size is in brackets

Note regarding Light Ligatures: Size descriptions have been updated for uniformity with the rest of our models. Old size descriptions are in brackets in Light column.

LIGATURE MOST COMMON FIT

Model Prefixes For Ordering: Dark (none), Light = L, MK III = C, Versa = V, Star Series - SS, Versa-X = X, Van Gogh = VG, Platinum = P, Platinum Gold = PG (*Example: X-1RL, PG-3R, etc.*)

CLARINET

		<i>Available in...</i>
Eb (Soprano)	1E	All models
Bb German String Type	1E	All models
Bb (soprano)	1R	All models
Eb (alto)	2RS	Dark & Versa only
Bb (bass)	3RL	All models
EEb (contra alto)	4RS	Dark only
BBb (contra bass)	4RL	Dark & Versa only

SAXOPHONE

Hard Rubber M.P.		<i>Available in...</i>
Sopranino	1RXS	Dark & Versa only
Soprano	1RVS	All models
Alto	1RL	All models
Tenor	2R	All models
Baritone	3R	All models
Bass	4R	Dark only
Metals M.P.		
Alto	1M	All models except Van Gogh
Tenor	2M	All models
Baritone	3ML	All models

Have you met the Rovner Ambassadors?

**Visit our website to see the many reasons they choose Rovner ligatures!
Here's a sampling!**

"I love Rovner ligatures. I can hear the positive difference that they make and I highly recommend them..."

-Kenny G

"I exclusively use Rovner ligatures...and I recommend them to all my students."

-Brent Bristow

"I tried the Platinum and Platinum Gold ligature from Rovner and now I finally feel that my set-up is complete!"

-Hailey Niswanger

LIGATURE SIZE RELATIONSHIP GUIDE

There are
10 HR
Sizes



Hard Rubber

As a general rule, hard rubber-type mouthpieces tend to be more conical in shape, while metal mouthpieces tend to be more cylindrical in shape.



Metal

There are
12 Metal
Sizes

SMALLEST	Hard Rubber											Metal											LARGEST
	HR	1 R X S					1 R V S					1 E	1 R	1 R L	2 R S	2 R	3 R	3 R L	4 R	4 R L	4 R S	HR	
		1	2	3	4	5	6	7	8	9	10	11	3	4	5	6	7	8	9	10		HR	
	METAL	1 M V S	2 R S M	1 M S	1 M B	1 M D	1 M	R A M	2 M	R T M	3 M L	3 M L NY			12 3 M V L							METAL	

CAP SIZE RELATIONSHIPS



SIZE 4

SIZE 4A
Slightly narrower at base.
SIZE 4X
Slightly wider at base.



SIZE 3

SIZE 3A
Slightly narrower at base.



SIZE 5

SIZE 5A
Slightly narrower at base.



SIZE 7



SIZE 2

SIZE 2A
Slightly narrower at base.



SIZE 6

SIZE 6A
Slightly narrower at base.



SIZE 1

SIZE 1A
Slightly narrower at base.



SIZE 8

SIZE 8A
Slightly narrower at base.

Did you know...

Rovner Products exhibits at and/or lends sponsorship to many events throughout the year to include NAMM, Midwest Clinic, JEN, the ClarinetFest, the NASMD Conference and other state educator and "specialty" shows...that we support many events and organizations with donations of gift certificates...that we have sent cash donations to dozens of musical organizations through our "Be Good, Do Good, Feel Good" Project? Why? Because we love what we do, and because we care about the people who use and recommend our products AND the people who sell them. We know our products make a difference...and our company makes a difference, too, when we make it our mission to give back!

Mouthpiece Brand To Ligature Sizing Guides

It seems like there's a new mouthpiece maker out there every day! Help your customers choose the correct ligature size with this handy guide. The following pages include an extensive list of mouthpiece brands/models and the Rovner sizes and models that will fit. We do our best to provide accurate info, and will continue to update the list as new data comes in.

Remember...

- if, for example, there's currently a Dark 2R on the mouthpiece and it's a good fit, the 2R in all the other sizes will also fit.
- if the mouthpiece brand is generic or unknown, the **most common fit** for that instrument is at the beginning of the list and is a good place to start. You'll also find the Most Common Fit chart and a smallest to largest ligature size relationship graphic on pages 12 and 13.

Prefixes for each model (required when ordering):

DARK - no prefix

Example: 3ML

Light - L

Example: L-3ML

MK III - C

Example: C-3ML

Versa - V

Example: V-3ML

Star Series - SS

Example: SS-3ML

Versa-X - X

Example: X-3ML

Van Gogh - VG

Example: VG-3ML

Platinum - P

Example: P-3ML

Platinum Gold - PG

Example: PG-3ML

***We're continually adding new brands to our mouthpiece-to-ligature sizing info.
If it's not listed here, check our website!***



**A ligature for any
player, at every level,
and in all genres!**



Prefixes for Ordering: Dark = none, Light = L, MKIII = C, Versa = V, Star Series = SS,
Versa-X = X, Van Gogh = VG, Platinum = P, Platinum Gold = PG

Brand	Model	Instrument Mouthpiece	MP Style	Ligature Size	Available Models
.Generic	.Most Common Fit	Eb Soprano Clarinet	HR	1E	All Models
.Generic	.Most Common Fit	Bb German String Type	HR	1E	All Models
.Generic	.Most Common Fit	Bb Soprano Clarinet	HR	1R	All Models
.Generic	.Most Common Fit	Eb Alto Clarinet	HR	2RS	Dark & Versa only
.Generic	.Most Common Fit	Bb Bass Clarinet	HR	3RL	All Models
.Generic	.Most Common Fit	EEb Contra Alto Clarinet	HR	4RS	Dark only
.Generic	.Most Common Fit	BBb Contra Bass Clarinet	HR	4RL	Dark & Versa only
.Generic	.Most Common Fit	Xaphoon	HR	2M	All Models
.Generic	.Most Common Fit	Sopranino Sax	HR	1RXS	Dark & Versa only
.Generic	.Most Common Fit	Sopranino Sax	Metal	NONE	
.Generic	.Most Common Fit	Soprano Sax	HR	1RVS	All Models
.Generic	.Most Common Fit	Soprano Sax	Metal	NONE	
.Generic	.Most Common Fit	Alto Sax	HR	1RL	All Models
.Generic	.Most Common Fit	Alto Sax	Metal	1M	All Models except Van Gogh
.Generic	.Most Common Fit	Tenor Sax	HR	2R	All Models
.Generic	.Most Common Fit	Tenor Sax	Metal	2M	All Models
.Generic	.Most Common Fit	Baritone Sax	HR	3R	All Models
.Generic	.Most Common Fit	Baritone Sax	Metal	3ML	All Models
.Generic	.Most Common Fit	Bass Sax	HR	4R	Dark only
.Generic	.Most Common Fit	Bass Sax	Metal	NONE	
10Mfan	Black Widow	Tenor Sax	HR	2R	All Models
10Mfan	Classic	Tenor Sax	HR	2R	All Models
10Mfan	Daddy-O	Alto Sax	HR	1RL	All Models
10Mfan	Merlot	Tenor Sax	HR	2R	All Models
10Mfan	Robusto	Tenor Sax	HR	2R	All Models
10Mfan	Showboat	Alto Sax	HR	1RL	All Models
10Mfan	Showtime	Tenor Sax	HR	2R	All Models
10Mfan		Soprano Sax	HR	1RVS	All Models
AM Mouthpiece	Aras	Soprano Sax	Metal	1M	All Models except Van Gogh
AM Mouthpiece	Aras	Alto Sax	Metal	1RVS	All Models
AM Mouthpiece	Aras	Tenor Sax	Metal	1RL	All Models
AM Mouthpiece	Aras	Baritone Sax	Metal	1RL	All Models
AM Mouthpiece	Cocobolo Wood	Alto Sax	HR	1RL	All Models
AM Mouthpiece	Cocobolo Wood	Tenor Sax	HR	2R	All Models
AM Mouthpiece	Cocobolo Wood	Baritone Sax	HR	3R	All Models
AM Mouthpiece	Katana	Soprano Sax	Metal	1M	All Models except Van Gogh
AM Mouthpiece	Katana	Alto Sax	Metal	1RVS	All Models
AM Mouthpiece	Katana	Tenor Sax	HR	2R	All Models
AM Mouthpiece	Katana	Tenor Sax	Metal	1RL	All Models
AM Mouthpiece	Katana	Baritone Sax	Metal	1RL	All Models
AM Mouthpiece	Luna	Soprano Sax	Metal	1M	All Models except Van Gogh
AM Mouthpiece	Luna	Alto Sax	Metal	1RVS	All Models
AM Mouthpiece	Luna	Tenor Sax	HR	2R	All Models
AM Mouthpiece	Luna	Tenor Sax	Metal	1RL	All Models
AM Mouthpiece	Luna	Baritone Sax	Metal	1RL	All Models

Prefixes for Ordering: Dark = none, Light = L, MKIII = C, Versa = V, Star Series = SS,
Versa-X = X, Van Gogh = VG, Platinum = P, Platinum Gold = PG

Brand	Model	Instrument Mouthpiece	MP Style	Ligature Size	Available Models
ARB Metals	ARB	Bb Soprano Clarinet	Metal	1MVS	Dark only
ARB Metals	ARB	Alto Sax	Metal	1MB	Dark only
ARB Metals	ARB	Tenor Sax	Metal	3ML	All Models
ARB Metals	ARB	Baritone Sax	Metal	1M	All Models except Van Gogh
Bari	Bari Gold	Soprano Sax	Metal	1RVS	All Models
Bari	Bari Gold	Alto Sax	Metal	1MB	Dark only
Bari	Bari Gold	Tenor Sax	Metal	1M	All Models except Van Gogh
Bari	Cyclone	Alto Sax	Metal	1MB	Dark only
Bari	Cyclone	Tenor Sax	Metal	1M	All Models except Van Gogh
Bari	Dakota	Alto Sax	HR	1RL	All Models
Bari	Esprit	Bb Soprano Clarinet	HR	1R	All Models
Bari	Esprit	Bb Bass Clarinet	HR	3RL	All Models
Bari	Esprit	Soprano Sax	HR	1RVS	All Models
Bari	Esprit	Alto Sax	HR	1RL	All Models
Bari	Esprit	Tenor Sax	HR	2R	All Models
Bari	Esprit II	Alto Sax	HR	1RL	All Models
Bari	Hard Rubber	Bb Soprano Clarinet	HR	1R	All Models
Bari	Hard Rubber	Soprano Sax	HR	1RVS	All Models
Bari	Hard Rubber	Alto Sax	HR	1RL	All Models
Bari	Hard Rubber	Tenor Sax	HR	2R	All Models
Bari	Hybrid Gold	Alto Sax	HR	1RL	All Models
Bari	Hybrid Gold	Tenor Sax	HR	2R	All Models
Bari	Hybrid Stainless	Alto Sax	HR	1RL	All Models
Bari	Hybrid Stainless	Tenor Sax	HR	2R	All Models
Bari	Infinity HR	Soprano Sax	HR	1RVS	All Models
Bari	Infinity HR	Alto Sax	HR	1RL	All Models
Bari	Infinity HR	Tenor Sax	HR	2R	All Models
Bari	Infinity Plastic	Soprano Sax	HR	1RVS	All Models
Bari	Infinity Plastic	Alto Sax	HR	1RL	All Models
Bari	Infinity Plastic	Tenor Sax	HR	2R	All Models
Bari	WT II	Alto Sax	Metal	1MB	Dark only
Bari	WT II	Tenor Sax	Metal	1M	All Models except Van Gogh
Beechler	ARB GreatNeck Orig.	Bb Soprano Clarinet	HR	1R	All Models
Beechler	ARB GreatNeck Orig.	Alto Sax	HR	1R	All Models
Beechler	ARB GreatNeck Orig.	Tenor Sax	HR	2R	All Models
Beechler	Bellite	Alto Sax	Metal	1MB	Dark only
Beechler	Bellite	Tenor Sax	Metal	3ML	All Models
Beechler	Custom	Alto Sax	HR	1RL	All Models
Beechler	Custom	Tenor Sax	HR	2R	All Models
Beechler	Custom	Baritone Sax	HR	3R	All Models
Beechler	Diamond	Alto Sax	HR	1RL	All Models
Beechler	Gold	Alto Sax	Metal	1MB	Dark only
Beechler	Gold	Tenor Sax	Metal	3ML	All Models
Beechler	Hard Rubber	Alto Sax	HR	1RL	All Models
Beechler	Tonalex	Alto Sax	HR	1RL	All Models
Berg Larson	Black Ebonite	Soprano Sax	HR	1RVS	All Models

Prefixes for Ordering: Dark = none, Light = L, MKIII = C, Versa = V, Star Series = SS, Versa-X = X, Van Gogh = VG, Platinum = P, Platinum Gold = PG					
Brand	Model	Instrument Mouthpiece	MP Style	Ligature Size	Available Models
Berg Larson	Black Ebonite	Alto Sax	HR	1RL	All Models
Berg Larson	Black Ebonite	Tenor Sax	HR	1RL	All Models
Berg Larson	Black Ebonite	Baritone Sax	HR	2RS	Dark & Versa only
Berg Larson	Bronze Gold	Baritone Sax	Metal	3ML	All Models
Berg Larson	Bronze Gold Slim	Tenor Sax	Metal	2M	All Models
Berg Larson	Bronze Gold(New)	Alto Sax	Metal	1M	All Models except Van Gogh
Berg Larson	Bronze Gold(New)	Tenor Sax	Metal	2M	All Models
Berg Larson	Bronze Gold(Old)	Alto Sax	Metal	1M	All Models except Van Gogh
Berg Larson	Bullet Bronze	Tenor Sax	Metal	2M	All Models
Berg Larson	Bullet Stainless	Tenor Sax	Metal	2M	All Models
Berg Larson	Duckbill Bronze	Tenor Sax	Metal	2M	All Models
Berg Larson	Duckbill Stainless	Tenor Sax	Metal	2M	All Models
Berg Larson	Grained Ebonite	Soprano Sax	HR	1RVS	All Models
Berg Larson	Grained Ebonite	Alto Sax	HR	1R	All Models
Berg Larson	Grained Ebonite	Tenor Sax	HR	1RL	All Models
Berg Larson	Grained Ebonite	Baritone Sax	HR	2RS	Dark & Versa only
Berg Larson	Special Range	Tenor Sax	Metal	2M	All Models
Berg Larson	Stainless	Baritone Sax	Metal	3ML	All Models
Berg Larson	Stainless (New)	Tenor Sax	Metal	2M	All Models
Berg Larson	Stainless Slim	Tenor Sax	Metal	2M	All Models
Berg Larson	Stainless(New)	Alto Sax	Metal	1M	All Models except Van Gogh
Berg Larson	Stainless(Old)	Alto Sax	Metal	1M	All Models except Van Gogh
Berg Larson	Vintage Bronze	Tenor Sax	Metal	2M	All Models
Berg Larson	Vintage Stainless	Tenor Sax	Metal	2M	All Models
Bilger	All Models	Soprano Sax	HR	1RVS	All Models
Bilger	All Models	Alto Sax	HR	1RL	All Models
Bilger	All Models	Tenor Sax	HR	2R	All Models
Brancher	B,E,and J Chamber	Soprano Sax	Metal	1MD	Dark & Versa only
Brancher	B,E,and J Chamber	Alto Sax	Metal	2M	All Models
Brancher	B,E,and J Chamber	Tenor Sax	Metal	2M	All Models
Brancher	L Chamber	Soprano Sax	HR	1RVS	All Models
Brancher	L Chamber	Soprano Sax	HR	1RVS	All Models
Brancher	L Chamber	Alto Sax	HR	1RL	All Models
Brancher	L Chamber	Alto Sax	HR	1RL	All Models
Brancher	L Chamber	Tenor Sax	HR	2R	All Models
Brancher	L Chamber	Tenor Sax	HR	2R	All Models
Brancher	L Chamber	Baritone Sax	HR	2RS	Dark & Versa only
Brancher	L Chamber	Baritone Sax	HR	2RS	Dark & Versa only
Brendan Tibbs	All models	Soprano Sax	Metal	1MS	Dark only
Brendan Tibbs	All models	Alto Sax	Metal	2M	All Models
Brendan Tibbs	All models	Tenor Sax	Metal	3ML	All Models
Brendan Tibbs	All models	Baritone Sax	Metal	1RL	All Models
Brilhart	All Models	Soprano Sax	HR	1RVS	All Models
Brilhart	All Models	Baritone Sax	HR	3R	All Models
Brilhart	All Models Level Air	Baritone Sax	Metal	3ML	All Models
Brilhart	Ebolin	Bb Soprano Clarinet	HR	1R	All Models
Brilhart	Ebolin	Alto Sax	HR	1RL	All Models
Brilhart	Ebolin	Tenor Sax	HR	2R	All Models
Brilhart	Great Neck	Alto Sax	HR	1RL	All Models

Prefixes for Ordering: Dark = none, Light = L, MKIII = C, Versa = V, Star Series = SS, Versa-X = X, Van Gogh = VG, Platinum = P, Platinum Gold = PG					
Brand	Model	Instrument Mouthpiece	MP Style	Ligature Size	Available Models
Brilhart	Hard Rubber	Alto Sax	HR	1RL	All Models
Brilhart	Hard Rubber	Tenor Sax	HR	2R	All Models
Brilhart	Level-Air	Alto Sax	Metal	1M	All Models except Van Gogh
Brilhart	Level-Air	Tenor Sax	Metal	2M	All Models
Brilhart	Personaline	Alto Sax	HR	1RL	All Models
Brilhart	Personaline	Tenor Sax	HR	2R	All Models
Brilhart	Slim Models	Tenor Sax	HR	1RL	All Models
Brilhart	Tonalin	Alto Sax	HR	1RL	All Models
Brilhart	Tonalin	Tenor Sax	HR	2R	All Models
Brilhart	Tonalite	Alto Sax	HR	1RL	All Models
Brilhart	Tonalite	Tenor Sax	HR	2R	All Models
Bundy	All Models	Bb Soprano Clarinet	HR	1R	All Models
Bundy	All Models	Alto Sax	HR	1RL	All Models
Bundy	All Models	Tenor Sax	HR	2R	All Models
Bundy	All Models	Baritone Sax	HR	3R	All Models
C.E.Winds	Florida	Tenor Sax	Metal	3ML	All Models
Caravan	All Models	Soprano Sax	HR	1RVS	All Models
Caravan	All Models	Alto Sax	HR	1RL	All Models
Caravan	All Models	Tenor Sax	HR	2R	All Models
Caravan	All Models	Baritone Sax	HR	4R	Dark only
Charles Bay	All Models	Bb Soprano Clarinet	HR	1R	All Models
Charles Bay	All Models	Eb Alto Clarinet	HR	2RS	Dark & Versa only
Charles Bay	All Models	Bb Bass Clarinet	HR	3RL	All Models
Charles Bay		Baritone Sax	HR	2R	All Models
Chedeville	Elite	Bb Soprano Clarinet	HR	1R	All Models
Chedeville	RC	Soprano Sax	HR	1RVS	All Models
Chedeville	RC	Alto Sax	HR	1RL	All Models
Chedeville	RC	Tenor Sax	HR	2R	All Models
Clark Fobes	10K	Eb Soprano Clarinet	HR	1E	All Models
Clark Fobes	10K	Bb Soprano Clarinet	HR	1R	All Models
Clark Fobes	10K	Eb Alto Clarinet	HR	2RS	Dark & Versa only
Clark Fobes	10K	Bb Bass Clarinet	HR	3RL	All Models
Clark Fobes	CWF	Bb Soprano Clarinet	HR	1R	All Models
Clark Fobes	Debut	Bb Soprano Clarinet	HR	1R	All Models
Clark Fobes	Debut	Eb Alto Clarinet	HR	2RS	Dark & Versa only
Clark Fobes	Debut	Bb Bass Clarinet	HR	3RL	All Models
Clark Fobes	Debut	BBb Contra Bass Clarinet	HR	4RL	Dark & Versa only
Clark Fobes	Debut	Alto Sax	HR	1RL	All Models
Clark Fobes	Debut	Tenor Sax	HR	2R	All Models
Clark Fobes	Debut	Baritone Sax	HR	3R	All Models

Prefixes for Ordering: Dark = none, Light = L, MKIII = C, Versa = V, Star Series = SS,
Versa-X = X, Van Gogh = VG, Platinum = P, Platinum Gold = PG

Brand	Model	Instrument Mouthpiece	MP Style	Ligature Size	Available Models
Clark Fobes	Europa	Bb Soprano Clarinet	HR	1R	All Models
Clark Fobes	Nova	Bb Soprano Clarinet	HR	1R	All Models
Clark Fobes	Nova	Eb Alto Clarinet	HR	2RS	Dark & Versa only
Clark Fobes	Nova	Bb Bass Clarinet	HR	3RL	All Models
Clark Fobes	Nova	EEb Contra Alto Clarinet	HR	4RS	Dark only
Clark Fobes	Nova	Alto Sax	HR	1RL	All Models
Clark Fobes	Nova	Tenor Sax	HR	2R	All Models
Clark Fobes	Nova	Baritone Sax	HR	3R	All Models
Clark Fobes	San Francisco	Bb Soprano Clarinet	HR	1R	All Models
Clark Fobes	San Francisco	BBb Contra Bass Clarinet	HR	4RL	Dark & Versa only
Couf	All Models	Soprano Sax	HR	1RXS	Dark & Versa only
Couf	All Models	Alto Sax	HR	1RL	All Models
Couf	All Models	Tenor Sax	HR	1RL	All Models
Couf	All Models	Baritone Sax	HR	2R	All Models
Drake	All Models	Soprano Sax	HR	1RVS	All Models
Drake	Contemporary	Baritone Sax	HR	2RS	Dark & Versa only
Drake	Eddie Daniels	Tenor Sax	HR	2R	All Models
Drake	J Bergonzi	Tenor Sax	HR	2RS	Dark & Versa only
Drake	NY Jazz	Alto Sax	HR	1RL	All Models
Drake	Pete Christlieb	Tenor Sax	HR	1M	All Models except Van Gogh
Drake	VR All Models	Alto Sax	HR	1R	All Models
Drake	VR Contemporary	Tenor Sax	HR	1RL	All Models
Drake	VRSST	Tenor Sax	HR	1E	All Models
Dukoff	Hard Rubber	Alto Sax	HR	2M	All Models
Dukoff	Model D	Soprano Sax	Metal	1MD	Dark & Versa only
Dukoff	Model D	Alto Sax	Metal	2M	All Models
Dukoff	Model D	Tenor Sax	Metal	2M	All Models
Dukoff	Model D	Baritone Sax	Metal	3ML	All Models
Dukoff	Model L	Tenor Sax	Metal	2M	All Models
Dukoff	Model M	Soprano Sax	Metal	1MD	Dark & Versa only
Dukoff	Model M	Alto Sax	Metal	2M	All Models
Dukoff	Model M	Tenor Sax	Metal	2M	All Models
Dukoff	Model M	Baritone Sax	Metal	3ML	All Models
Dukoff	Model X	Tenor Sax	Metal	2M	All Models
Francois Louis	All Models	Alto Sax	HR	1RL	All Models
Francois Louis	All Models	Tenor Sax	HR	2RS	Dark & Versa only
Francois Louis	All Models	Baritone Sax	HR	2R	All Models
Guardala	FiberCarbon	Alto Sax	Metal	2M	All Models
Guardala	FiberCarbon	Tenor Sax	Metal	2M	All Models
Guardala	King	Alto Sax	Metal	2M	All Models
Guardala	King	Tenor Sax	Metal	2M	All Models
Guardala	MBII	Tenor Sax	Metal	2M	All Models
Guardala	MBII Fatboy	Tenor Sax	Metal	2M	All Models
Guardala	MBI	Tenor Sax	Metal	2M	All Models
Guardala	Studio Fatboy	Alto Sax	Metal	2M	All Models

Prefixes for Ordering: Dark = none, Light = L, MKIII = C, Versa = V, Star Series = SS,
Versa-X = X, Van Gogh = VG, Platinum = P, Platinum Gold = PG

Brand	Model	Instrument Mouthpiece	MP Style	Ligature Size	Available Models
Guy Hawkins	All Models	Bb Soprano Clarinet	HR	1R	All Models
Guy Hawkins	All Models	Soprano Sax	HR	1RVS	All Models
Guy Hawkins	All Models	Alto Sax	HR	1RL	All Models
Guy Hawkins	All Models	Alto Sax	Metal	1M	All Models except Van Gogh
Guy Hawkins	All Models	Tenor Sax	Metal	1M	All Models except Van Gogh
Guy Hawkins	All Models	Baritone Sax	Metal	2M	All Models
JD Hite	All Models	Bb Soprano Clarinet	HR	1R	All Models
JD Hite	All Models	Soprano Sax	HR	1RVS	All Models
JD Hite	All Models	Alto Sax	HR	1RL	All Models
JD Hite	All Models	Tenor Sax	HR	1RL	All Models
JD Hite	All Models	Baritone Sax	HR	2R	All Models
JJ Babbit	All Models	Bb Soprano Clarinet	HR	1R	All Models
JJ Babbit	All Models	Soprano Sax	HR	1RVS	All Models
JJ Babbit	All Models	Alto Sax	HR	1RL	All Models
JJ Babbit	All Models	Tenor Sax	HR	2R	All Models
JJ Babbit	All Models	Tenor Sax	Metal	2M	All Models
JJ Babbit	All Models	Baritone Sax	HR	4R	Dark only
JJ Babbit	All Models	Bass Sax	HR	4R	Dark only
JodyJazz	DV	Soprano Sax	Metal	1RXS	Dark & Versa only
JodyJazz	DV	Alto Sax	Metal	1RVS	All Models
JodyJazz	DV	Tenor Sax	Metal	3ML	All Models
JodyJazz	DV	Baritone Sax	Metal	3ML	All Models
JodyJazz	DV	Bass Sax	Metal	3ML	All Models
JodyJazz	DV Chicago	Tenor Sax	Metal	3ML	All Models
JodyJazz	DV New York	Alto Sax	Metal	1RVS	All Models
JodyJazz	DV New York	Tenor Sax	Metal	3ML	All Models
JodyJazz	DV New York	Baritone Sax	Metal	3ML	All Models
JodyJazz	Giant	Tenor Sax	HR	2R	All Models
JodyJazz	HR	Soprano Sax	HR	1RVS	All Models
JodyJazz	HR	Alto Sax	HR	1RL	All Models
JodyJazz	HR	Tenor Sax	HR	2R	All Models
JodyJazz	Jet	Alto Sax	HR	2RS	Dark & Versa only
JodyJazz	Jet	Tenor Sax	HR	2R	All Models
JodyJazz	Jet	Baritone Sax	HR	2R	All Models
JodyJazz	Super Jet	Soprano Sax	Metal	1RXS	Dark & Versa only
JodyJazz	Super Jet	Alto Sax	Metal	1RVS	All Models
JodyJazz	Super Jet	Tenor Sax	Metal	3ML	All Models
JodyJazz	Super Jet	Baritone Sax	Metal	3ML	All Models
Lakey	Apollo Brass	Soprano Sax	Metal	1RVS	All Models
Lakey	Apollo Brass	Alto Sax	Metal	1RL	All Models
Lakey	Apollo Brass	Tenor Sax	Metal	1RL	All Models
Lakey	Apollo Ebonite	Alto Sax	HR	1RL	All Models
Lakey	Apollo Ebonite	Tenor Sax	HR	2R	All Models
Lakey	Apollo Rhodium	Soprano Sax	Metal	1RVS	All Models
Lakey	Apollo Rhodium	Alto Sax	Metal	1RL	All Models
Lakey	Apollo Rhodium	Tenor Sax	Metal	1RL	All Models
Lakey	Orginal	Bb Soprano Clarinet	HR	1R	All Models

Prefixes for Ordering: Dark = none, Light = L, MKIII = C, Versa = V, Star Series = SS,
Versa-X = X, Van Gogh = VG, Platinum = P, Platinum Gold = PG

Brand	Model	Instrument Mouthpiece	MP Style	Ligature Size	Available Models
Lakey	Orginal	Soprano Sax	HR	1RL	All Models
Lakey	Orginal	Alto Sax	HR	1RL	All Models
Lakey	Orginal	Tenor Sax	HR	2R	All Models
Lawton	BB	Tenor Sax	Metal	3ML	All Models
Lawton		Baritone Sax	Metal	3ML	All Models
Lebayle	Jazz Chamber	Soprano Sax	Metal	1M	All Models except Van Gogh
Mac sax	D-Jazz	Soprano Sax	HR	1RVS	All Models
Mac sax	D-Jazz	Alto Sax	HR	1RL	All Models
Mac sax	D-Jazz	Tenor Sax	HR	2R	All Models
Mac sax	D-Jazz	Baritone Sax	HR	2R	All Models
Mac sax	FJ-III	Alto Sax	HR	1RL	All Models
Mac sax	FJ-III	Tenor Sax	HR	3ML	All Models
Meyer	All Models	Bb Soprano Clarinet	HR	1R	All Models
Meyer	All Models	Soprano Sax	HR	1RVS	All Models
Meyer	All Models	Alto Sax	HR	1RL	All Models
Meyer	All Models	Alto Sax	Metal	1M	All Models except Van Gogh
Meyer	All Models	Tenor Sax	HR	2R	All Models
Meyer	All Models	Tenor Sax	Metal	2M	All Models
Meyer	All Models	Baritone Sax	HR	2R	All Models
Meyer	All Models	Baritone Sax	Metal	2M	All Models
Morgan	"C"	Soprano Sax	HR	1RVS	All Models
Morgan	"C"	Alto Sax	HR	1RL	All Models
Morgan	"C"	Tenor Sax	HR	2R	All Models
Morgan	"C"	Tenor Sax	HR	2RS	Dark & Versa only
Morgan	"C"	Baritone Sax	HR	4R	Dark only
Morgan	"C"	Bass Sax	HR	4R	Dark only
Morgan	"E"	Alto Sax	HR	1R	All Models
Morgan	"E"	Tenor Sax	HR	1RL	All Models
Morgan	"J"	Soprano Sax	HR	1RVS	All Models
Morgan	"J"	Baritone Sax	HR	3R	All Models
Morgan	"L&M"	Soprano Sax	HR	1RVS	All Models
Morgan	"L&M"	Alto Sax	HR	1RL	All Models
Morgan	"L&M"	Tenor Sax	HR	2R	All Models
Morgan	"S"	Soprano Sax	HR	1RVS	All Models
Morgan	"S"	Alto Sax	HR	1RL	All Models
Morgan	"S"	Tenor Sax	HR	2R	All Models
Morgan	"S"	Baritone Sax	HR	4R	Dark only
Morgan	4M	Alto Sax	HR	1RL	All Models
Morgan	Excaliber	Alto Sax	HR	1R	All Models
Morgan	Excaliber	Tenor Sax	HR	1RL	All Models
Morgan	Vintage 1C	Soprano Sax	HR	1RVS	All Models
Morgan	Vintage 9"	Baritone Sax	HR	2R	All Models
Navarro	Maestra Custom	Alto Sax	HR	1RL	All Models
Otto Link	All Models	Bb Soprano Clarinet	HR	1R	All Models
Otto Link	All Models	Soprano Sax	HR	1RVS	All Models
Otto Link	All Models	Soprano Sax	Metal	1MVS	Dark only
Otto Link	All Models	Alto Sax	HR	1RL	All Models
Otto Link	All Models	Alto Sax	Metal	3ML	All Models

Prefixes for Ordering: Dark = none, Light = L, MKIII = C, Versa = V, Star Series = SS, Versa-X = X, Van Gogh = VG, Platinum = P, Platinum Gold = PG					
Brand	Model	Instrument Mouthpiece	MP Style	Ligature Size	Available Models
Otto Link	All Models	Tenor Sax	HR	2R	All Models
Otto Link	All Models	Tenor Sax	Metal	3ML	All Models
Otto Link	All Models	Baritone Sax	HR	2R	All Models
Otto Link	All Models	Baritone Sax	Metal	3MVL	Dark only
Otto Link	NY Model	Tenor Sax	Metal	3ML-NY	Dark only
Phil Barone	Hollywood	Tenor Sax	Metal	3ML	All Models
Phil Barone	Jazz HR	Alto Sax	HR	1RL	All Models
Phil Barone	Jazz Metal	Tenor Sax	Metal	3ML	All Models
Phil Barone	New York	Soprano Sax	HR	1RVS	All Models
Phil Barone	New York	Alto Sax	HR	1RL	All Models
Phil Barone	SoundMaster	Tenor Sax	HR	2R	All Models
Phil Barone	Super New York	Tenor Sax	Metal	3ML	All Models
Phil Barone	Vintage HR	Soprano Sax	HR	1RVS	All Models
Phil Barone	Vintage HR	Tenor Sax	HR	2R	All Models
Phil Barone		Alto Sax	Metal	1M	All Models except Van Gogh
Ponzol	Aluminum	Soprano Sax	Metal	1MB	Dark only
Ponzol	Aluminum	Alto Sax	Metal	2M	All Models
Ponzol	Aluminum	Tenor Sax	Metal	3ML	All Models
Ponzol	Aluminum	Baritone Sax	Metal	3ML	All Models
Ponzol	Custom	Soprano Sax	Metal	1MB	Dark only
Ponzol	Custom	Alto Sax	Metal	2M	All Models
Ponzol	Custom	Tenor Sax	Metal	3ML	All Models
Ponzol	Custom	Baritone Sax	Metal	3ML	All Models
Ponzol	EBO	Alto Sax	HR	1RL	All Models
Ponzol	EBO	Tenor Sax	HR	2R	All Models
Ponzol	Gold Brass	Tenor Sax	Metal	2M	All Models
Ponzol	Silver Line	Alto Sax	HR	1RL	All Models
Ponzol	Silver Line	Tenor Sax	HR	2R	All Models
Ponzol	Stainless	Soprano Sax	Metal	1MB	Dark only
Ponzol	Stainless	Alto Sax	Metal	2M	All Models
Ponzol	Stainless	Tenor Sax	Metal	3ML	All Models
Ponzol	Stainless	Baritone Sax	Metal	3ML	All Models
Ponzol	Vintage	Soprano Sax	HR	1RVS	All Models
Ponzol	Vintage	Alto Sax	HR	1RL	All Models
Ponzol	Vintage	Tenor Sax	HR	2R	All Models
Portnoy	All Models	Eb Soprano Clarinet	HR	1E	All Models
Portnoy	All Models	Bb Soprano Clarinet	HR	1R	All Models
Portnoy	All Models	Eb Alto Clarinet	HR	2RS	Dark & Versa only
Portnoy	All Models	Bb Bass Clarinet	HR	3RL	All Models
Precision Crafted		Alto Sax	Metal	RTM	Dark, Versa, Star Series, Platinum, Platinum Gold
Precision Crafted		Tenor Sax	Metal	1M	All Models except Van Gogh
Rampone&Cazzani	All models	Soprano Sax	HR	1RVS	All Models
Rampone&Cazzani	All models	Alto Sax	HR	1RL	All Models
Rampone&Cazzani	All models	Tenor Sax	HR	2R	All Models
Rampone&Cazzani	All models	Baritone Sax	HR	3R	All Models
RCW	RCW Intermediate	Bb Soprano Clarinet	HR	1R	All Models

Prefixes for Ordering: Dark = none, Light = L, MKIII = C, Versa = V, Star Series = SS,
Versa-X = X, Van Gogh = VG, Platinum = P, Platinum Gold = PG

Brand	Model	Instrument Mouthpiece	MP Style	Ligature Size	Available Models
RCW	RCW Pro	Bb Soprano Clarinet	HR	1R	All Models
RIA	All models	Soprano Sax	Metal	1MS	Dark only
RIA	All models	Alto Sax	Metal	3ML	All Models
RIA	All models	Tenor Sax	Metal	3ML	All Models
Rico	All models	Alto Sax	HR	1RL	All Models
Rico	All models	Tenor Sax	HR	2R	All Models
Rico	All models	Baritone Sax	HR	2R	All Models
Rousseau	All models	Soprano Sax	HR	1RVS	All Models
Rousseau	All models	Alto Sax	HR	1RL	All Models
Rousseau	All models	Alto Sax	Metal	1M	All Models except Van Gogh
Rousseau	All models	Tenor Sax	HR	2R	All Models
Rousseau	All models	Tenor Sax	Metal	2M	All Models
Rousseau	All models	Baritone Sax	HR	2R	All Models
Rovner	All models	Soprano Sax	Metal	RSM	Dark & Versa Only
Rovner	All models	Alto Sax	Metal	RAM	Dark, Versa, Star Series, Platinum, Platinum Gold
Rovner	All models	Tenor Sax	Metal	RTM	Dark, Versa, Star Series, Platinum, Platinum Gold
Rovner	G Series	Soprano Sax	HR	1RXS	Dark & Versa only
Rovner	G Series	Alto Sax	HR	1RL	All Models
Rovner	G Series	Tenor Sax	HR	2R	All Models
Rovner	Wilkerson	Soprano Sax	HR	1RXS	Dark & Versa only
Rovner	Wilkerson	Alto Sax	HR	1RL	All Models
Rovner	Wilkerson	Tenor Sax	HR	2R	All Models
Rovner	Wilkerson	Baritone Sax	HR	1RL	All Models
RPC		Baritone Sax	HR	2R	All Models
Runyon	"88"	Alto Sax	HR	1E	All Models
Runyon	"88"	Tenor Sax	HR	1E	All Models
Runyon	"88"	Baritone Sax	HR	1RL	All Models
Runyon	22"	Tenor Sax	HR	2R	All Models
Runyon	Bionix	Alto Sax	HR	1R	All Models
Runyon	Bionix	Tenor Sax	HR	2RS	Dark & Versa only
Runyon	Custom	Bb Soprano Clarinet	HR	1R	All Models
Runyon	Custom	Soprano Sax	HR	1RXS	Dark & Versa only
Runyon	Custom	Alto Sax	HR	1E	All Models
Runyon	Custom	Tenor Sax	HR	1E	All Models
Runyon	Custom	Baritone Sax	HR	1RL	All Models
Runyon	Finesse	Alto Sax	HR	1RL	All Models
Runyon	Finesse	Tenor Sax	HR	1E	All Models
Runyon	Jazz	Bb Soprano Clarinet	HR	1R	All Models
Runyon	Jazz	Alto Sax	HR	1E	All Models
Runyon	Quantum	Soprano Sax	HR	1RXS	Dark & Versa only
Runyon	Quantum	Soprano Sax	Metal	1RXS	Dark & Versa only
Runyon	Quantum	Alto Sax	HR	1M	All Models except Van Gogh
Runyon	Quantum	Alto Sax	Metal	1M	All Models except Van Gogh
Runyon	Quantum	Tenor Sax	HR	1RVS	All Models
Runyon	Quantum	Tenor Sax	Metal	1RVS	All Models
Runyon	Quantum	Baritone Sax	HR	1E	All Models
Runyon	Quantum	Baritone Sax	Metal	1E	All Models
Runyon	Smooth Bore	Soprano Sax	Metal	1MS	Dark only

Prefixes for Ordering: Dark = none, Light = L, MKIII = C, Versa = V, Star Series = SS,
Versa-X = X, Van Gogh = VG, Platinum = P, Platinum Gold = PG

Brand	Model	Instrument Mouthpiece	MP Style	Ligature Size	Available Models
Runyon	Smooth Bore	Alto Sax	Metal	1M	All Models except Van Gogh
Runyon	Smooth Bore	Tenor Sax	Metal	3ML	All Models
Runyon	Smooth Bore	Baritone Sax	Metal	1E	All Models
Runyon	SR	Tenor Sax	HR	3ML	All Models
Runyon	XL	Soprano Sax	HR	1RXS	Dark & Versa only
Runyon	XL	Soprano Sax	Metal	1MS	Dark only
Runyon	XL	Alto Sax	HR	1M	All Models except Van Gogh
Runyon	XL	Tenor Sax	HR	1RVS	All Models
Runyon	XL	Tenor Sax	Metal	3ML	All Models
Saxscape	Arizona	Tenor Sax	Metal	3ML	All Models
Saxscape	Downtown MB1	Tenor Sax	Metal	3ML	All Models
Saxscape	Downtown Studio	Tenor Sax	Metal	3ML	All Models
Saxscape	Fatcat	Tenor Sax	HR	2R	All Models
Saxscape	Florida	Tenor Sax	Metal	3ML	All Models
Saxscape	Hudson	Tenor Sax	HR	2R	All Models
Saxscape	Live	Tenor Sax	Metal	3ML	All Models
Saxscape	Niama	Tenor Sax	HR	2R	All Models
Saxscape	Redriver	Tenor Sax	HR	2R	All Models
Saxscape	Slant	Tenor Sax	HR	2R	All Models
Saxscape	Xtra Dark	Tenor Sax	HR	2R	All Models
Selmer	C85	Eb Soprano Clarinet	HR	1E	All Models
Selmer	Claude Delangle	Alto Sax	HR	1RL	All Models
Selmer	Concept	Bb Soprano Clarinet	HR	1R	All Models
Selmer	Concept	Bb Bass Clarinet	HR	3RL	All Models
Selmer	Concept	Soprano Sax	HR	1RVS	All Models
Selmer	Concept	Alto Sax	HR	1RL	All Models
Selmer	Concept	Tenor Sax	HR	2R	All Models
Selmer	CP100	Bb Soprano Clarinet	HR	1R	All Models
Selmer	Focus	Bb Soprano Clarinet	HR	1R	All Models
Selmer	Focus	Bb Bass Clarinet	HR	3RL	All Models
Selmer	Focus	Soprano Sax	HR	1RVS	All Models
Selmer	Larry Teal	Alto Sax	HR	1RL	All Models
Selmer	Larry Teal	Tenor Sax	HR	2R	All Models
Selmer	Metal Classic	Soprano Sax	Metal	1MS	Dark only
Selmer	Metal Classic	Alto Sax	Metal	2RS	Dark & Versa only
Selmer	Metal Classic	Tenor Sax	Metal	2M	All Models
Selmer	Metal Jazz	Alto Sax	Metal	2RS	Dark & Versa only
Selmer	S80	Sopranino Sax	HR	1RXS	Dark & Versa only
Selmer	S80	Soprano Sax	HR	1RVS	All Models
Selmer	S80	Alto Sax	HR	1RL	All Models
Selmer	S80	Tenor Sax	HR	2R	All Models
Selmer	S80	Baritone Sax	HR	3R	All Models
Selmer	S80	Bass Sax	HR	4R	Dark only
Selmer	S90	Soprano Sax	HR	1RVS	All Models
Selmer	S90	Alto Sax	HR	1RL	All Models
Selmer	S90	Tenor Sax	HR	2R	All Models

Prefixes for Ordering: Dark = none, Light = L, MKIII = C, Versa = V, Star Series = SS,
Versa-X = X, Van Gogh = VG, Platinum = P, Platinum Gold = PG

Brand	Model	Instrument Mouthpiece	MP Style	Ligature Size	Available Models
Selmer	S90	Baritone Sax	HR	3R	All Models
Selmer	SD20	Alto Sax	HR	1RL	All Models
Selmer	SD20	Tenor Sax	HR	2R	All Models
Selmer	Solist	Alto Sax	HR	1RL	All Models
Selmer	Soloist	Tenor Sax	HR	2R	All Models
Selmer	Spirit	Alto Sax	HR	1RL	All Models
Selmer	Standard	Eb Soprano Clarinet	HR	1E	All Models
Selmer	Standard	Bb Soprano Clarinet	HR	1R	All Models
Selmer	Standard	Eb Alto Clarinet	HR	2RS	Dark & Versa only
Selmer	Standard	Bb Bass Clarinet	HR	3RL	All Models
Selmer	Standard	EEb Contra Alto Clarinet	HR	4RS	Dark only
Selmer	Standard	BBb Contra Bass Clarinet	HR	4RL	Dark & Versa only
Selmer	Super Session	Soprano Sax	HR	1RVS	All Models
SR Technologies	All models	Soprano Sax	HR	1RVS	All Models
SR Technologies	All models	Soprano Sax	Metal	1MS	Dark only
SR Technologies	All models	Alto Sax	HR	1RL	All Models
SR Technologies	All models	Alto Sax	Metal	1M	All Models except Van Gogh
SR Technologies	All models	Tenor Sax	HR	2R	All Models
SR Technologies	All models	Tenor Sax	Metal	2M	All Models
SR Technologies	All models	Baritone Sax	HR	3ML	All Models
SR Technologies	All models	Baritone Sax	Metal	3ML	All Models
SYOS	All models	Soprano Sax	HR	1RVS	All Models
SYOS	All models	Alto Sax	HR	1RL	All Models
SYOS	All models	Tenor Sax	HR	2R	All Models
SYOS	All models	Baritone Sax	HR	2R	All Models
Theo Wanne	Ambika 2	Tenor Sax	HR	2R	All Models
Theo Wanne	Ambika 2	Tenor Sax	Metal	3ML	All Models
Theo Wanne	Durga 3	Soprano Sax	HR	1RVS	All Models
Theo Wanne	Durga 3	Soprano Sax	Metal	1RVS	All Models
Theo Wanne	Durga 3	Alto Sax	HR	1RL	All Models
Theo Wanne	Durga 3	Alto Sax	Metal	1RL	All Models
Theo Wanne	Durga 3	Tenor Sax	Metal	3ML	All Models
Theo Wanne	Durga 3	Baritone Sax	Metal	3ML	All Models
Theo Wanne	Earth Alto	Alto Sax	Metal	1RL	All Models
Theo Wanne	Fire Alto	Alto Sax	Metal	1RL	All Models
Theo Wanne	Gaia 2	Bb Soprano Clarinet	HR	1R	All Models
Theo Wanne	Gaia 2	Soprano Sax	HR	1RVS	All Models
Theo Wanne	Gaia 2	Alto Sax	HR	1RL	All Models
Theo Wanne	Gaia 2	Alto Sax	Metal	1RL	All Models
Theo Wanne	Gaia 3	Tenor Sax	HR	2R	All Models
Theo Wanne	Gaia 3	Tenor Sax	Metal	3ML	All Models
Theo Wanne	Mantra	Soprano Sax	Metal	1RVS	All Models
Theo Wanne	Mindi Abair	Alto Sax	Metal	1M	All Models except Van Gogh
Theo Wanne	NY Bros 2	Alto Sax	HR	1RL	All Models
Theo Wanne	Shiva 2	Soprano Sax	HR	1RVS	All Models

Prefixes for Ordering: Dark = none, Light = L, MKIII = C, Versa = V, Star Series = SS, Versa-X = X, Van Gogh = VG, Platinum = P, Platinum Gold = PG					
Brand	Model	Instrument Mouthpiece	MP Style	Ligature Size	Available Models
Theo Wanne	Shiva 2	Alto Sax	HR	1RL	All Models
Theo Wanne	Shiva 2	Tenor Sax	Metal	3ML	All Models
Theo Wanne	Shiva 2	Baritone Sax	Metal	3ML	All Models
Theo Wanne	Shiva 3	Soprano Sax	Metal	1RVS	All Models
Theo Wanne	Slant Sig 2	Tenor Sax	HR	2R	All Models
Theo Wanne	Water	Alto Sax	HR	1RL	All Models
Vandoren	All Models	Eb Soprano Clarinet	HR	1E	All Models
Vandoren	All Models	Bb German String Type	HR	1E	All Models
Vandoren	All Models	Bb German String Type	HR	1E	All Models
Vandoren	All Models	Bb Soprano Clarinet	HR	1R	All Models
Vandoren	All Models	Eb Alto Clarinet	HR	2RS	Dark & Versa only
Vandoren	All Models	Bb Bass Clarinet	HR	3RL	All Models
Vandoren	Contrabass	BBb Contra Bass Clarinet	HR	4RL	Dark & Versa only
Vandoren	Java Series	Alto Sax	HR	1RL	All Models
Vandoren	Java Series	Tenor Sax	HR	2R	All Models
Vandoren	Jumbo Java	Alto Sax	HR	1RL	All Models
Vandoren	Jumbo Java	Tenor Sax	HR	2R	All Models
Vandoren	Optimum	Soprano Sax	HR	1RVS	All Models
Vandoren	Optimum	Alto Sax	HR	1RL	All Models
Vandoren	Optimum	Tenor Sax	HR	2R	All Models
Vandoren	Optimum	Baritone Sax	HR	3R	All Models
Vandoren	Profile AP3	Alto Sax	HR	1RL	All Models
Vandoren	Profile SP3	Soprano Sax	HR	1RVS	All Models
Vandoren	Slim Line	Tenor Sax	HR	1RL	All Models
Vandoren	Slim Line	Baritone Sax	HR	2R	All Models
Vandoren	V16	Soprano Sax	HR	1RVS	All Models
Vandoren	V16	Alto Sax	HR	1RL	All Models
Vandoren	V16	Tenor Sax	HR	2R	All Models
Vandoren	V16	Baritone Sax	HR	2R	All Models
Vandoren	V5 & V5 Jazz	Sopranino Sax	HR	1RXS	Dark & Versa only
Vandoren	V5 & V5 Jazz	Soprano Sax	HR	1RVS	All Models
Vandoren	V5 & V5 Jazz	Alto Sax	HR	1RL	All Models
Vandoren	V5 & V5 Jazz	Tenor Sax	HR	2R	All Models
Vandoren	V5 & V5 Jazz	Baritone Sax	HR	3R	All Models
Vandoren	V5 & V5 Jazz	Bass Sax	HR	4R	Dark only
Vandoren	W270	Bb German String Type	HR	1E	All Models
Warburton	A	Soprano Sax	HR	1MVS	Dark only
Warburton	J	Soprano Sax	HR	1RVS	All Models
Wolfe Tayne	All Models	Bb Soprano Clarinet	HR	1R	All Models
Wolfe Tayne	All Models	Soprano Sax	HR	1RVS	All Models
Wolfe Tayne	All Models	Alto Sax	HR	1RL	All Models
Wolfe Tayne	All Models	Alto Sax	Metal	1M	All Models except Van Gogh
Wolfe Tayne	All Models	Tenor Sax	HR	2R	All Models
Wolfe Tayne	All Models	Tenor Sax	Metal	1M	All Models except Van Gogh

Prefixes for Ordering: Dark = none, Light = L, MKIII = C, Versa = V, Star Series = SS, Versa-X = X, Van Gogh = VG, Platinum = P, Platinum Gold = PG					
Brand	Model	Instrument Mouthpiece	MP Style	Ligature Size	Available Models
Wolfe Tayne	All Models	Baritone Sax	Metal	2M	All Models
Xaphoon	Xaphoon	Xaphoon	HR	2M	All Models
Yamaha	All Models	Eb Soprano Clarinet	HR	1E	All Models
Yamaha	All Models	Bb Soprano Clarinet	HR	1R	All Models
Yamaha	All Models	Eb Alto Clarinet	HR	2RS	Dark & Versa only
Yamaha	All Models	Bb Bass Clarinet	HR	3RL	All Models
Yamaha	All Models	Soprano Sax	HR	1RVS	All Models
Yamaha	All Models	Alto Sax	HR	1RL	All Models
Yamaha	All Models	Tenor Sax	HR	2R	All Models
Yamaha	All Models	Baritone Sax	HR	3R	All Models
Yanagisawa	All Models	Soprano Sax	HR	1RVS	All Models
Yanagisawa	All Models	Soprano Sax	HR	1RVS	All Models
Yanagisawa	All Models	Soprano Sax	Metal	1MVS	Dark only
Yanagisawa	All Models	Alto Sax	HR	1RL	All Models
Yanagisawa	All Models	Alto Sax	Metal	2M	All Models
Yanagisawa	All Models	Tenor Sax	HR	2R	All Models
Yanagisawa	All Models	Tenor Sax	Metal	2M	All Models
Yanagisawa	All Models	Baritone Sax	HR	3R	All Models
Yanagisawa	All Models	Baritone Sax	Metal	3ML	All Models

..and the list will
continue to grow!

*Thanks for choosing
Rovner® Products!*



ROVNER®
P·R·O·D·U·C·T·S
• MADE IN THE USA •

www.rovnerproducts.com

For Product Support:

410-252-7750 x701

support@rovnerproducts.com

© 2021 Rovner® Products, Inc. All Rights Reserved.

REV 010121